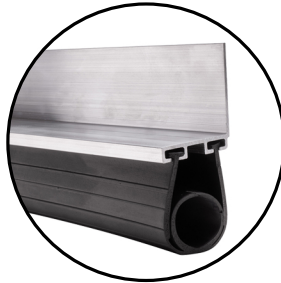


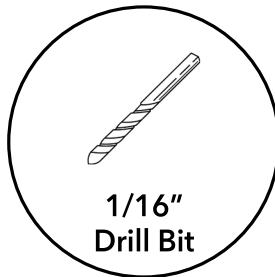
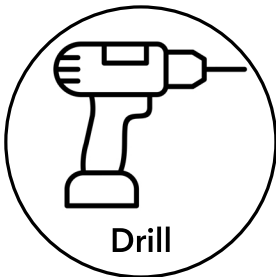


ULTRA RUBBER GARAGE DOOR BOTTOM SEAL KIT



INSTALLATION GUIDE

Tools Required:



*If trimming retainer is necessary

STEP 1:

With garage door closed, disconnect your garage door opener trolley by using the pull handle. Open the door 3/4 of the way and lock it in place using the vice grips on the garage door track.

STEP 2:

Remove old weather seal and bottom retainer if applicable (DO NOT remove your bottom brackets on the sides of the garage door with the cables attached).

STEP 3:

Pre-drill holes every 18" on the back vertical part of the "L" shaped retainers.

STEP 4:

"L" shaped retainers are designed to be mounted on the inside of the garage. Mount the retainers using the provided screws along the bottom of the garage door. Be sure retainers fit tightly together. Use the hack saw to trim the final retainer to fit if necessary.

STEP 5:

Slide the seal into the retainer from one end, feed the seal through the retainer until you reach the other side. Make sure "T" ends of the seal stay in the retainer. Once you the other side you can trim the extra seal using a pair of scissors.

Seal. Secure. Operate.

ShopActionDirect.com