

TORPEDO-ONE

PRESENCE SENSOR

FOR LOW - ENERGY SWINGING DOORS

FEATURES & BENEFITS

- **Door reactivation upon detection.**
 - Reduces liability / Provides peace of mind To building owner
- **Mounted out of harms-way at the top of the door.**
 - Lowers exposure to damage and vandalism.
- **Eliminates the need for artificially increased door hold open times.**
 - Savings on heating and cooling costs.

PRODUCT INFORMATION

The **TORPEDO-ONE** reliably detects stationary as well as moving objects in the swing path of low energy automatic doors. Mounted on the approach side, the **TORPEDO-ONE** reactivates upon detection during the closing cycle of the door thus protecting slow-moving people as well as people trailing behind. When using the **TORPEDO-ONE** the need for an extended hold open time is eliminated allowing the door to begin the close cycle after the minimum 5 second hold open time has elapsed.



CONTACTLESS EXPERIENCE!

SLEEK, RELIABLE, EASY TO INSTALL !



- **TORPEDO-ONE** ALLOWS RE-ACTIVATION OF DOOR BEFORE CONTACT IS MADE DURING THE CLOSING CYCLE.
- Keep the door open upon detection for the slow-moving person
- Re-opens door upon detection for the person trailing and slow to cross threshold

KEY FEATURES

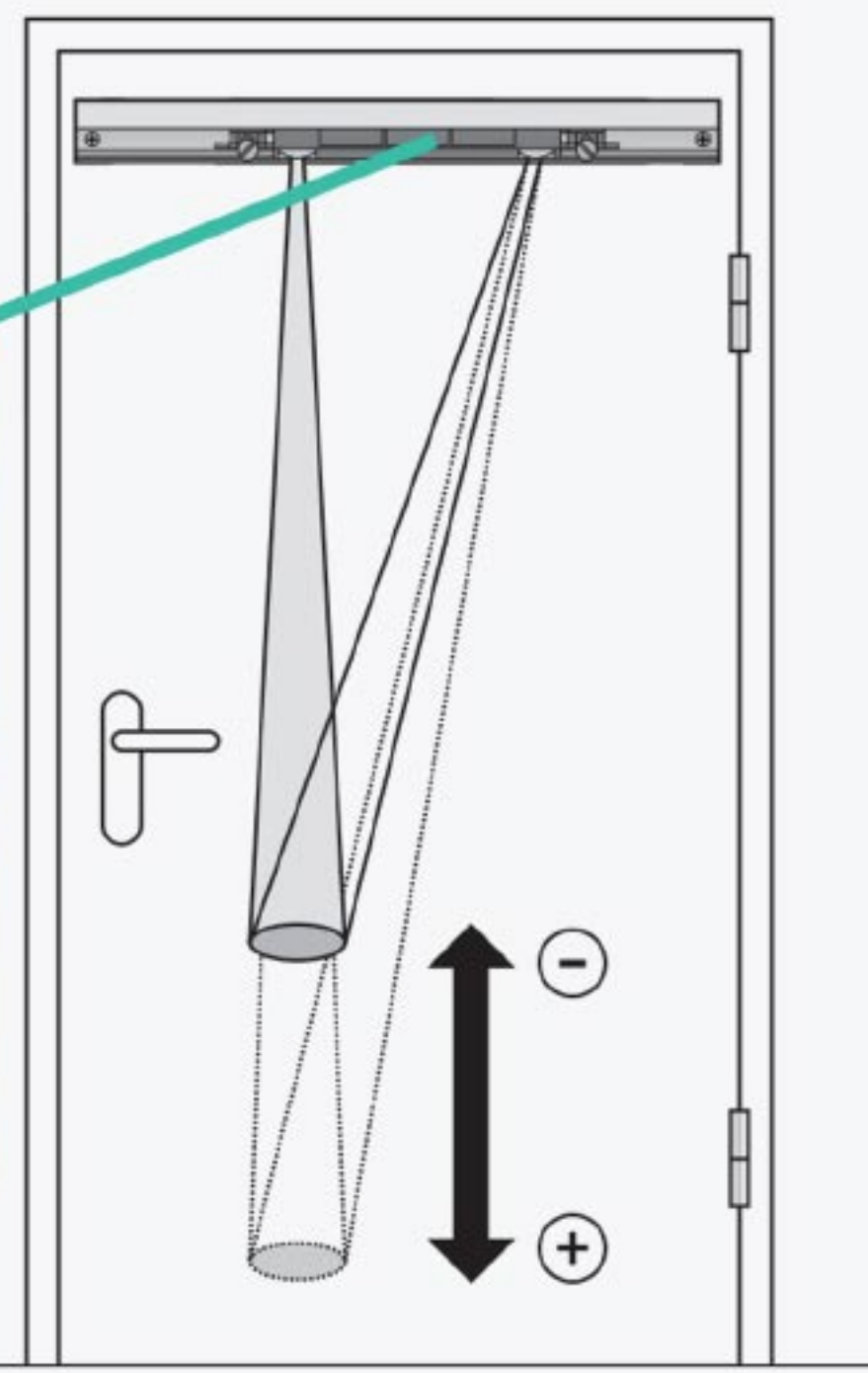
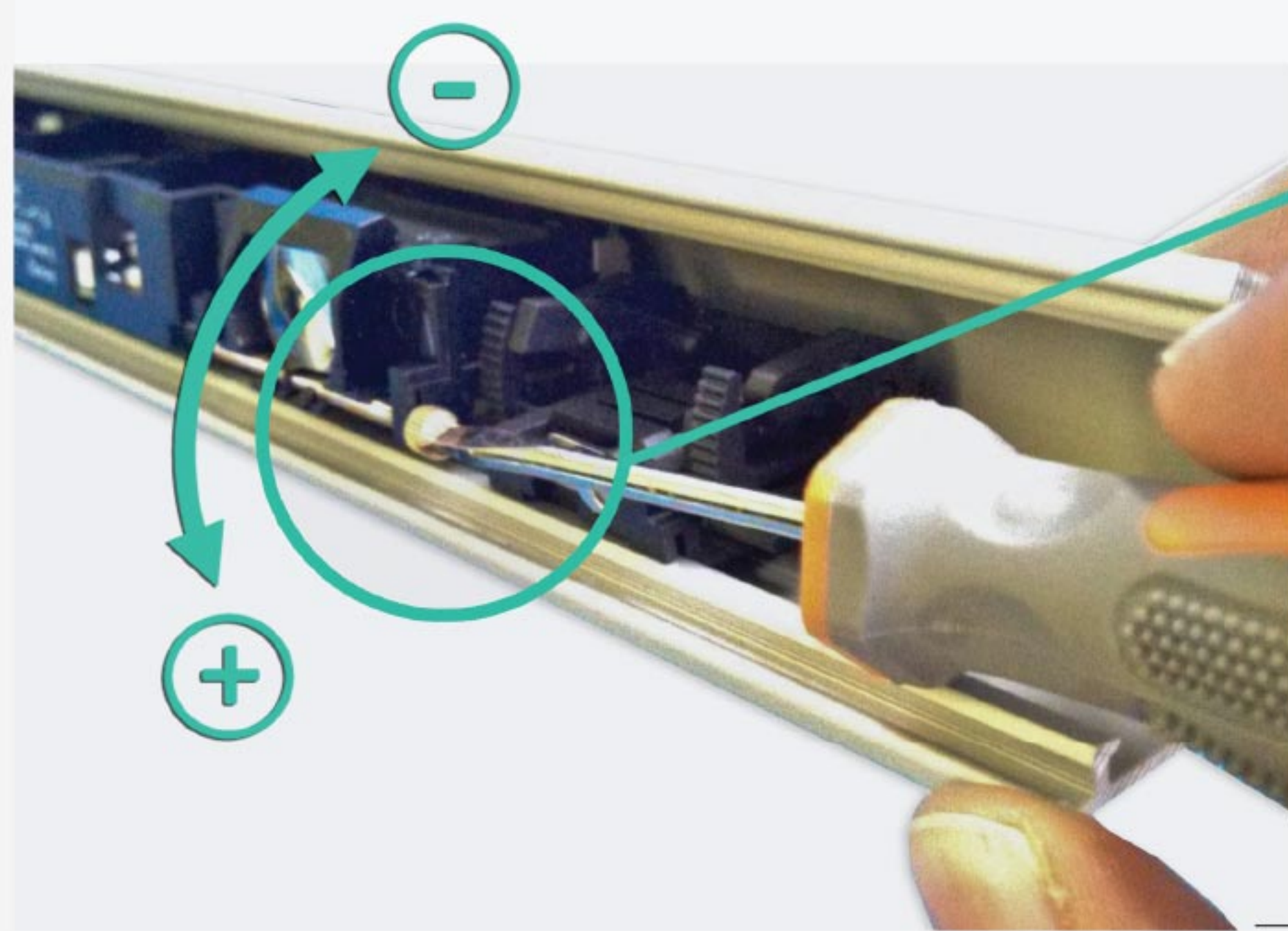
- Exceed ANSI.156.19 standards by offering a contactless experience
- Proven active infrared technology (distance measurement sensor using the principle of triangulation)
- Guarantees smooth and safe operation of a door intended to be used by the elderly and disabled people. Sensor is only active following a knowing activation such as pressing a wall switch.
- Following a door activation, the Torpedo remains enabled to allow continued automatic non-contact re-activation capability should someone remain in the door opening while the door is open or while it is closing.

PRODUCT DESCRIPTION & SPECIFICATIONS

SCANNING AND DETECTION

Adjust depth scanning range with set screw.

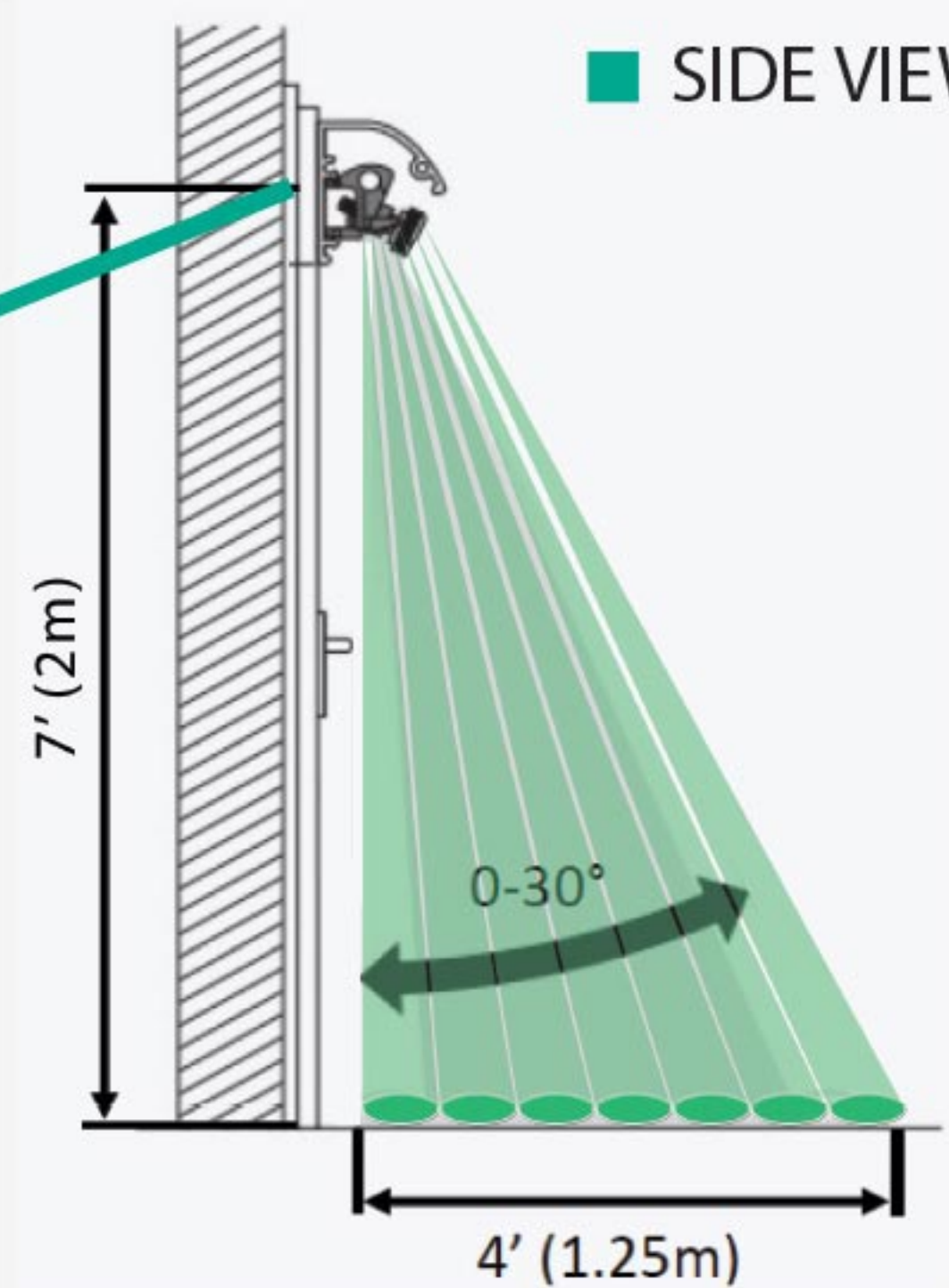
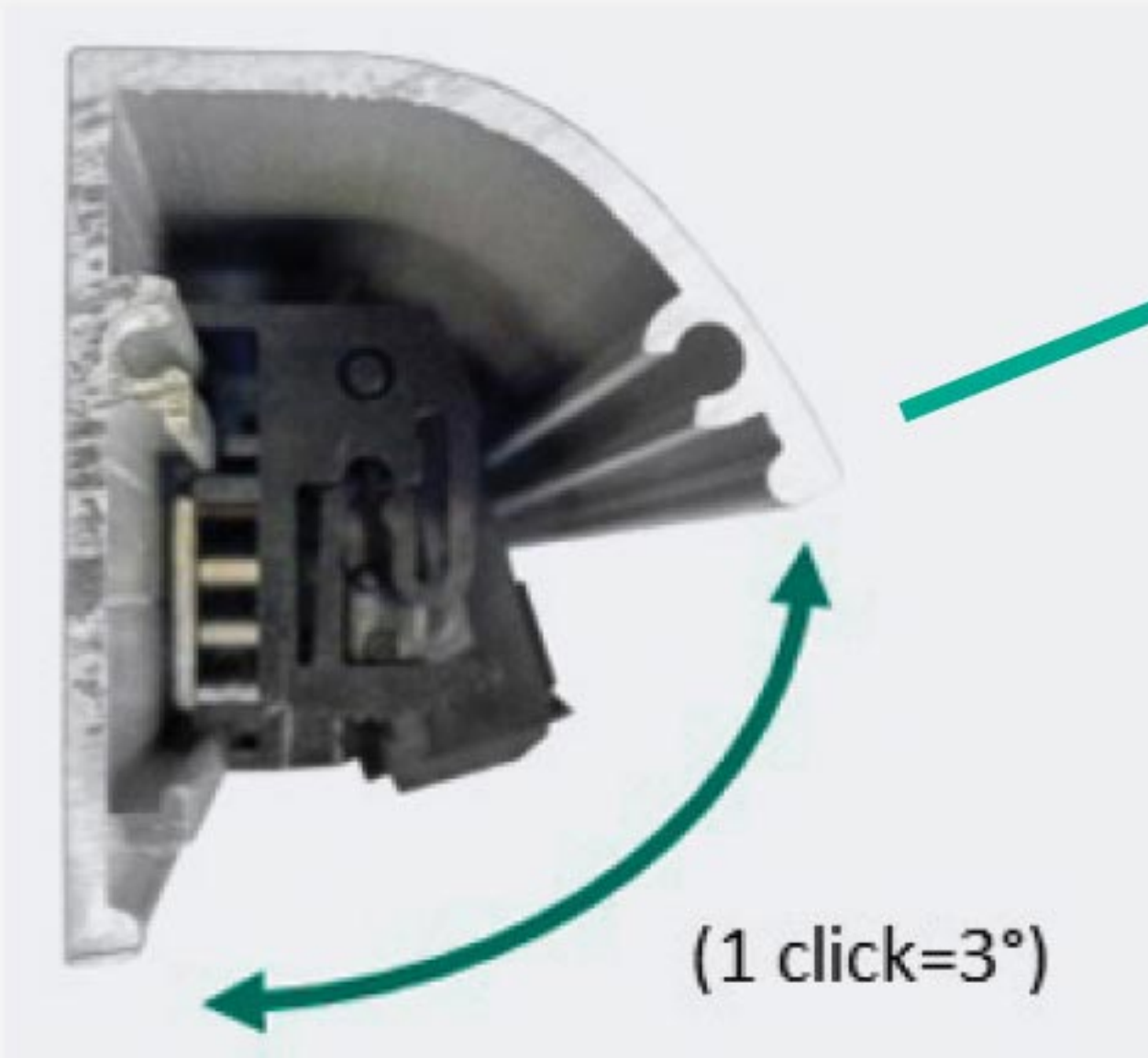
FRONT VIEW



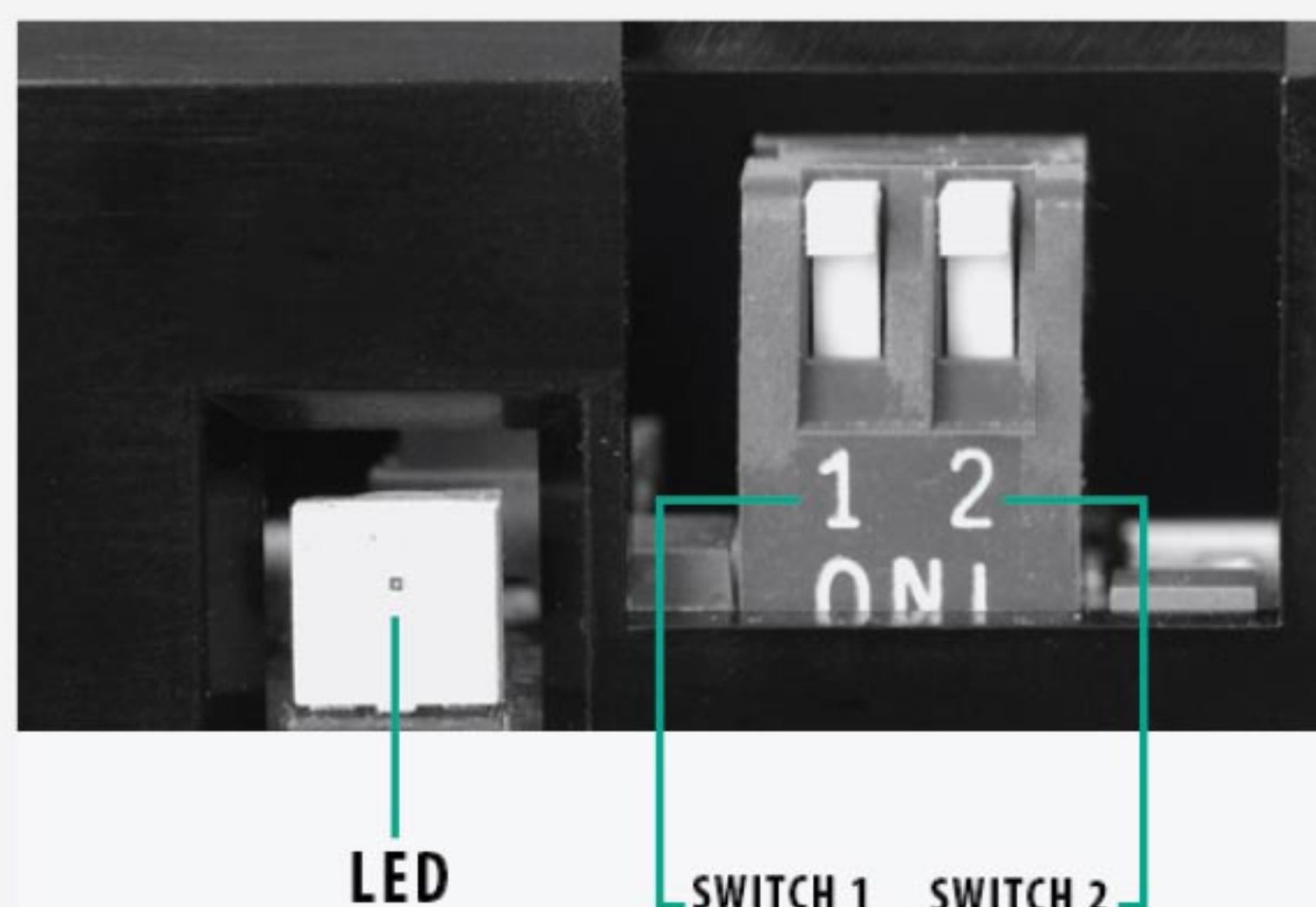
TILT ANGLE

Adjust detection pattern away from door.

SIDE VIEW



DIPSWITCH SETTINGS:



- ☒ 1 ☐ 2 * Background Suppression
 - ☒ 1 ☐ 2 Background analysis
 - ☒ 1 ☐ 2 * Relay N.O.
 - ☒ 1 ☐ 2 Relay N.C.
- * DEFAULT



Tucker Auto-Mation Headquarters.

1081 3rd St.
North Versailles, PA 15137
Toll Free: 1-855-8 TUCKER (1-855-888-2537)
Tel: 412-823-2537 - **Fax:** 412-816-1862
www.tuckerauto-mation.com

910.1008.01

SPECIFICATIONS



TORPEDO-ONE PRESENCE SENSOR

TECHNICAL DATA

Housing material	Aluminium
Front cover	Unbreakable black polycarbonate (PC)
Weight (36" assembly)	1 lb, 8 oz (0.68 kg)
Dimensions Housing (ind. end cap)	W x H 34½" x 1.7" (876.3 mm x 44 mm)
Connection type	Plug-in screw terminal
Technology	Active infrared, pulsed 880 nm, triangulation principle
IR spot dimension	Approx. 3" (75 mm) in diameter for scanning range of 80" (2000 mm)
Mounting height	5.5' to 8.8' (1.7 to 2.7 m)
Response time on detection	Approx. 30 milliseconds

ELECTRICAL DATA

Supply voltage	17 to 37 VDC 18 to 26 VAC
Current consumption	< 110 mA
Output	Relay, changeover contact 48 V AC/DC, 0.5A AC, 1A DC 55 VA / 24 W

ENVIRONMENTAL CONDITIONS

Protection class	NEMA 3s
Operating temperature	-4 °F to +140°F (-20 °C to +60 °C)
Air humidity	< 95 %, non-condensing

Note

Technical details and recommendations on our products are based upon experience and represent guidelines for the user. Details in brochures and specification sheets do not guarantee any special product features, apart from those we confirmed in individual cases. We reserve the right to make changes as the result of technical developments.