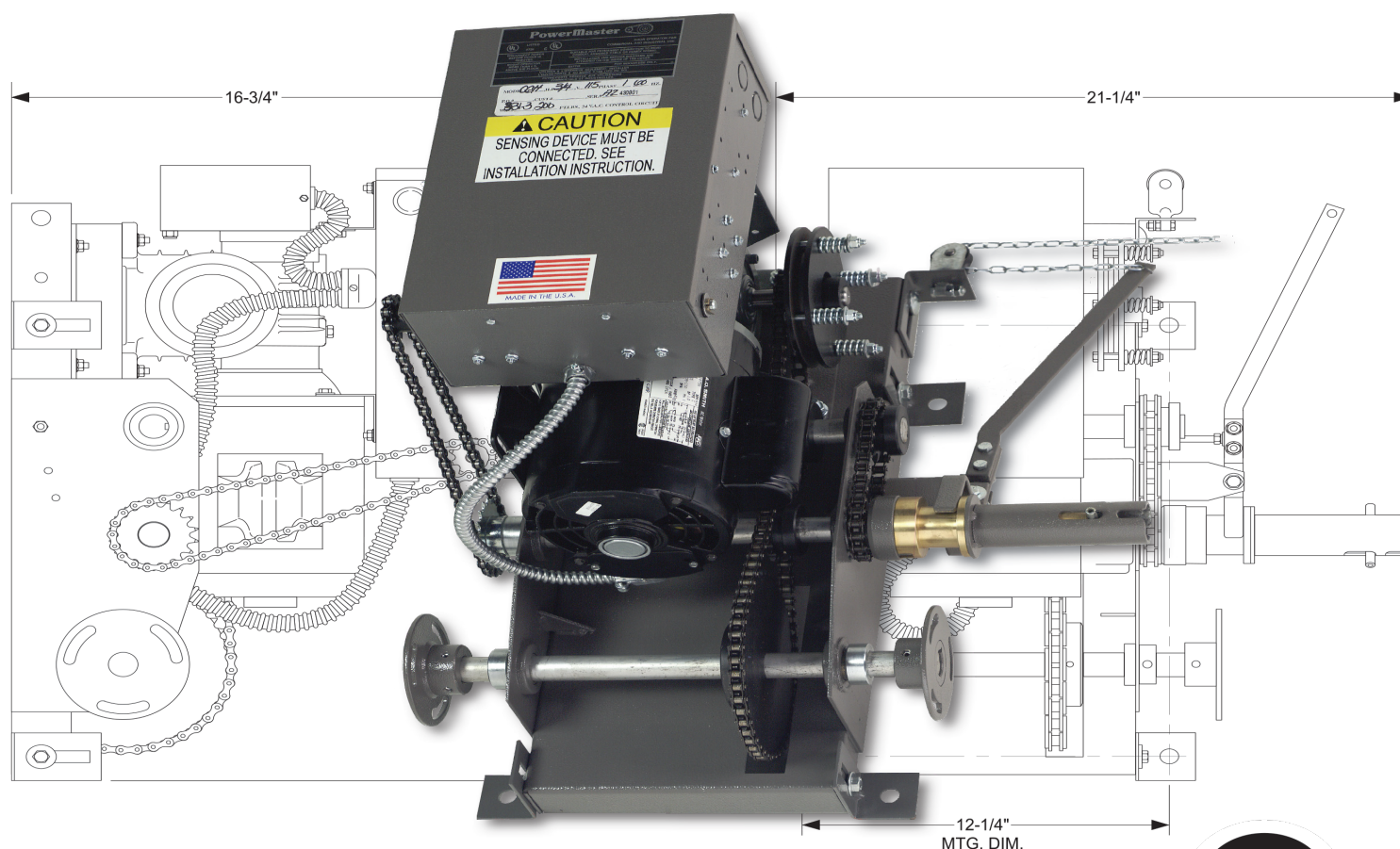


powermaster

INSTALLATION AND OWNER'S MANUAL

MODEL CGH

Center-mounted Gearhead Operator



Serial #:
Date Installed:
Your Dealer:

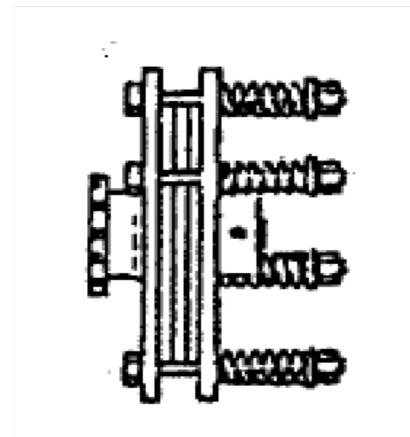
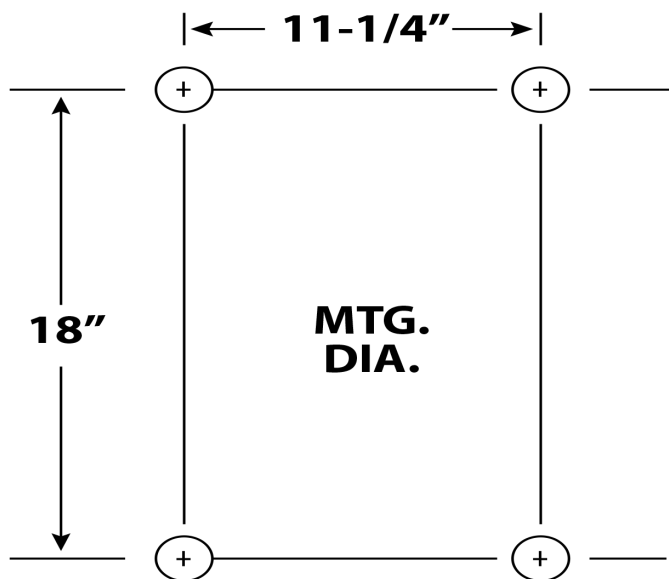
READ THIS MANUAL CAREFULLY
BEFORE INSTALLATION OR USE.
SAVE THESE INSTRUCTIONS.



As of date of manufacture,
meets all ANSI/UL 325
Safety Requirements for
Vehicular door operators.

WALL MOUNTING INSTALLATION

1. Using the center of the door drive shaft as a reference point, locate four mounting holes.
2. Mount the operator on the wall using 3/8" through bolts for a secure mounting. If wall is of such construction as to prohibit the use of through bolts, bolts and shields of sufficient size may be used.
3. Install coupling.



CLUTCH

CLUTCH ADJUSTMENT

The clutch is set to its lightest adjustment by the manufacturer. To tighten the clutch, turn all four of the clutch adjusting nuts clockwise 1/4 turn each. Retry the operator. Repeat the adjustment and electrical running operations as necessary until the operator can fully open and fully close the door with no clutch slippage during travel. This procedure will provide the lightest required setting of the clutch to permit the most safety without an obstacle sensing device.

LUBRICATION

All bearings throughout the CGH operator are oil sealed, lubricated for life, anti-friction bearings. The motor is factory lubricated and requires no additional lubrication. A few drops of oil should be applied periodically to the moving parts of the disconnect device.

MANUAL OPERATION

TO ENGAGE MANUAL OPERATING CHAIN:

1. Pull down and hold the disconnect chain.
2. While holding the disconnect chain, move manual operating chain to assure complete engagement of manual drive gears.
3. Lock disconnect chain in place utilizing locking device.
4. Interlock switch in operator cuts off power to motor when manual chain is engaged.
5. Release of disconnect chain will re-engage operator for electrical operation.

CONNECTING TO POWER SUPPLY

Consult local electrical codes before proceeding with permanent installation.



WARNING

EXERCISE CAUTION WHEN OPERATING MACHINE. THE DRIVE CHAIN AND LIMIT DRIVE CHAIN ARE EXPOSED, AND WHEN TURNING, COULD CAUSE INJURY. WIRING DIAGRAMS WILL BE FOUND INSIDE ELECTRICAL ENCLOSURE COVER. CONNECT OPERATOR TO PROPERLY GROUNDED SUPPLY (GREEN COLORED SLOTTED HEAD SCREW IS SUPPLIED IN CONTROL BOX), AND INSTALL CONTROL STATIONS AS REQUIRED.

NOTE: This unit must be properly grounded.

On 3-phase units, make certain that operator rotates in correct direction. If direction is wrong, limit switches will not function and damage will occur. It is recommended that door be moved manually to a mid-position before turning on power, so that it may be stopped before damage occurs, if rotation is incorrect. If direction is wrong, reverse any two of the three incoming power supply leads to correct rotation. After wiring has been checked and operator is running properly, limits will probably need re-adjusting (See Limit Adjustment).

When operators with wiring types that utilize constant pressure on the *Close* button are used, the control station must be located so that the operation of the door may be observed by the person operating the door.

CONNECTION OF A SAFETY EDGE DEVICE

A separate 24V electrical circuit is provided for the connection of a safety edge device. Any such device that uses a normally open contact may be connected to terminals #8 and #9 on the low voltage terminal block. When the safety device is actuated (when the door comes in contact with an object during downward travel), the circuit will cause the motor to stop and reverse the door to the fully open position. In addition, there is a cut-off limit switch in the circuit that will de-activate the safety device during the last few inches of downward door travel.

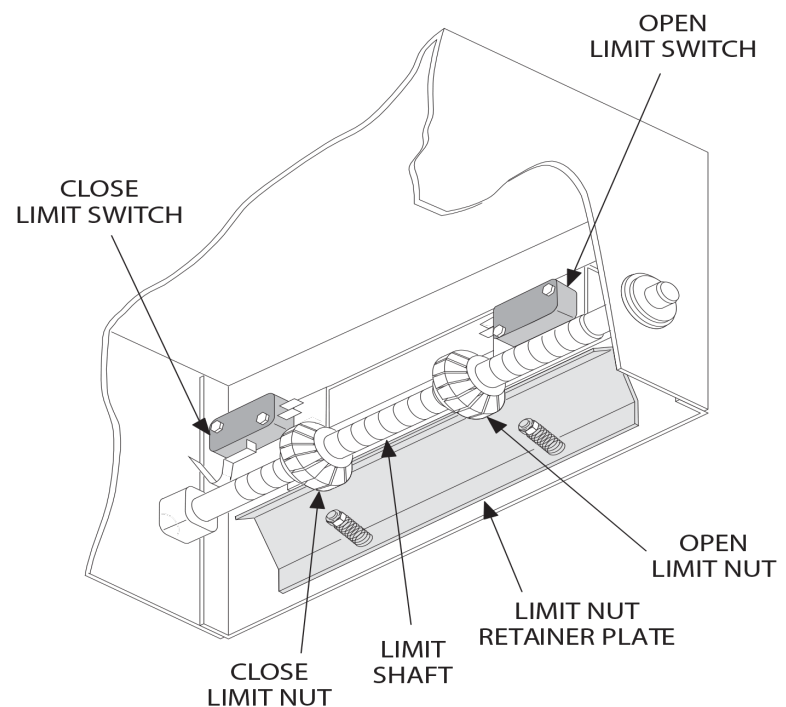
LIMIT SWITCH ADJUSTMENT FOR MOTOR OPERATORS

1. Before operating door, set grooved nuts in center position between limit switches.
2. While raising door electrically, depress limit switch in the direction which the nuts are travelling. This should stop the travel of the door if wired correctly.

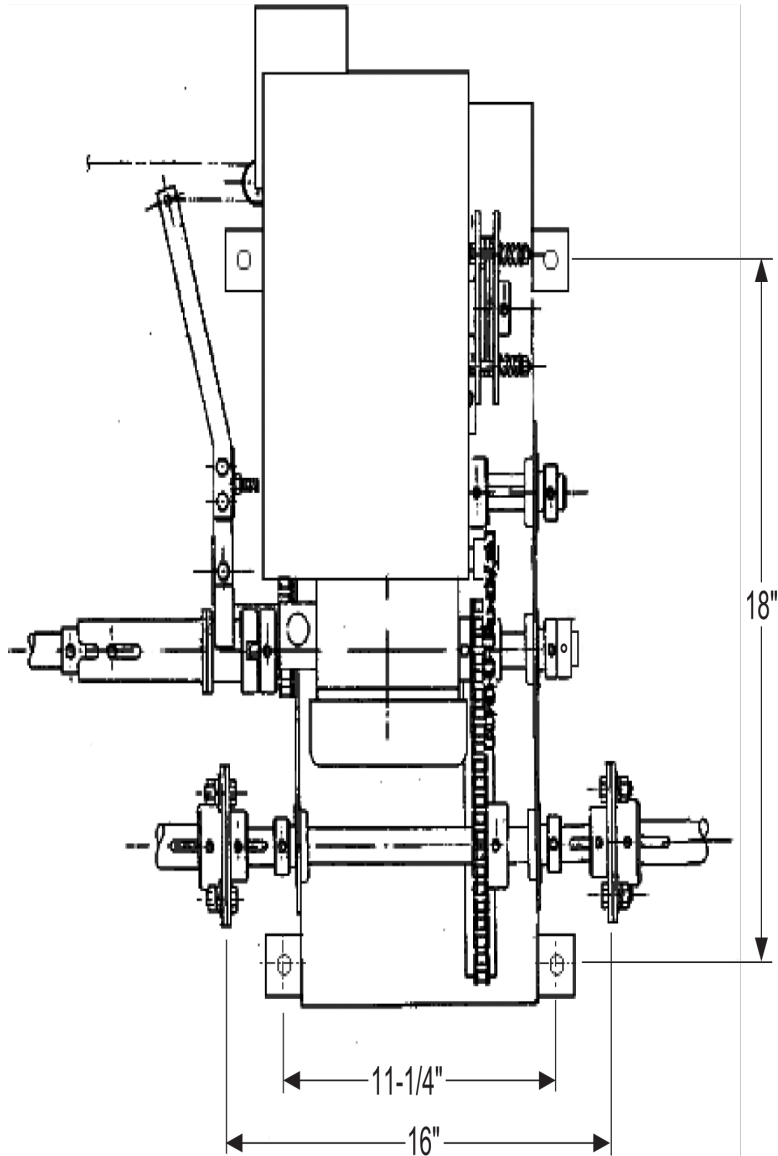
NOTE: On 3-phase Motors, it is possible to run operator in the wrong direction, so that limits will not shut off. If this occurs, interchange any two power lines feeding the operator and repeat Step #2.

3. Depress pressure plate to move groove nuts to desired location:
 - To stop door earlier, move nut closer to limit switch plunger
 - To stop door later, back nut away from limit switch plunger

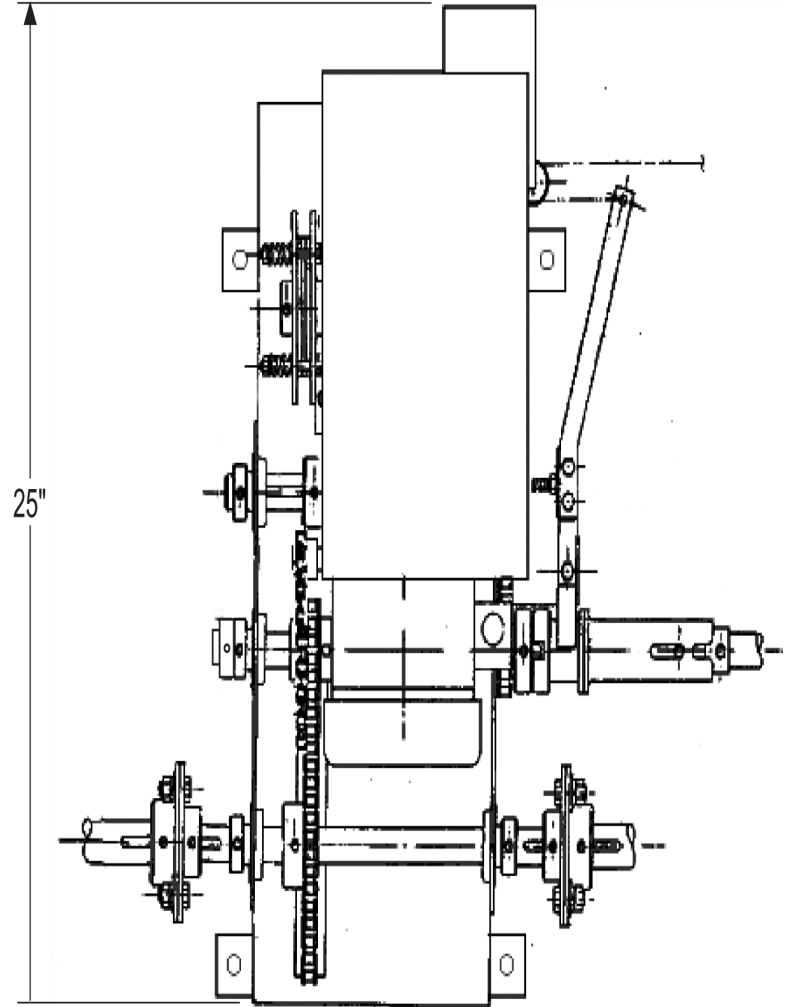
When making fine adjustments, turn nut only 1/4 to 1/2 turn at a time, and run door again, electrically. After setting nuts in desired position, make certain that groove is engaged by the pressure plate.



CENTER MOUNTED CGH OPERATOR

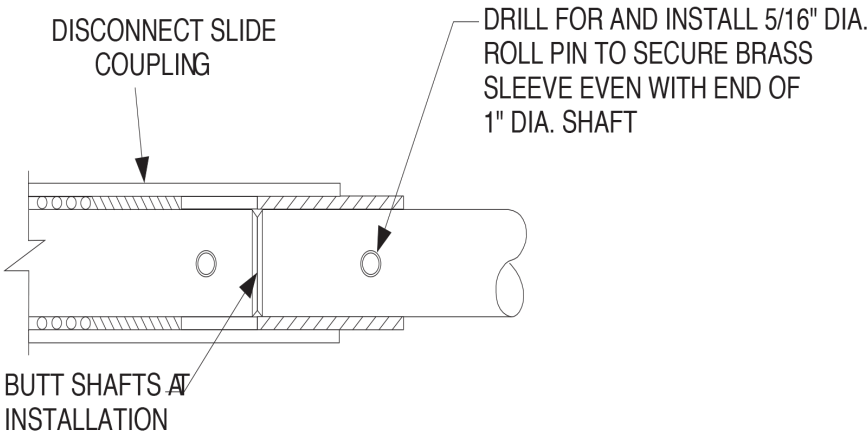


LEFT HAND MOUNTING

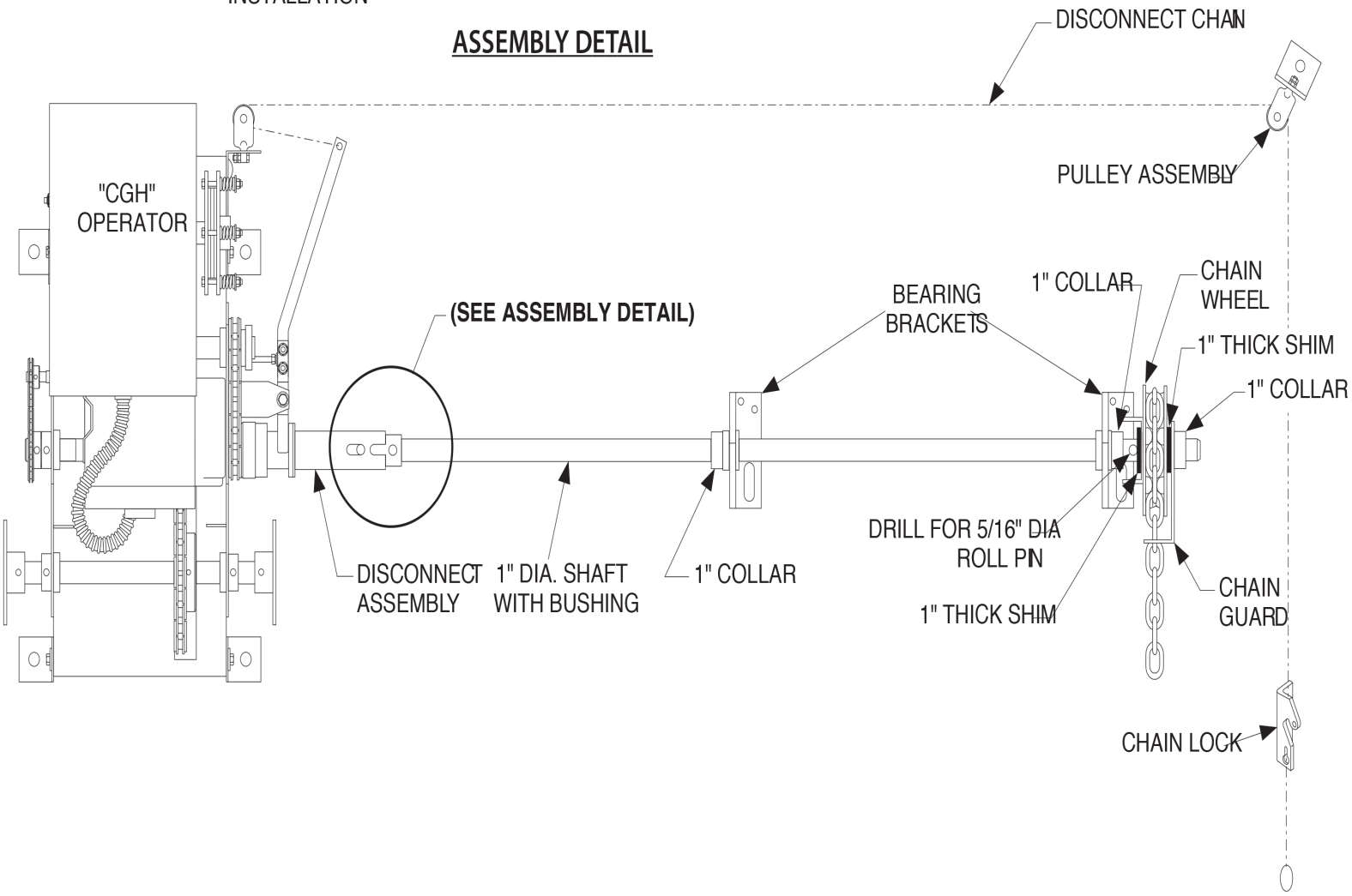


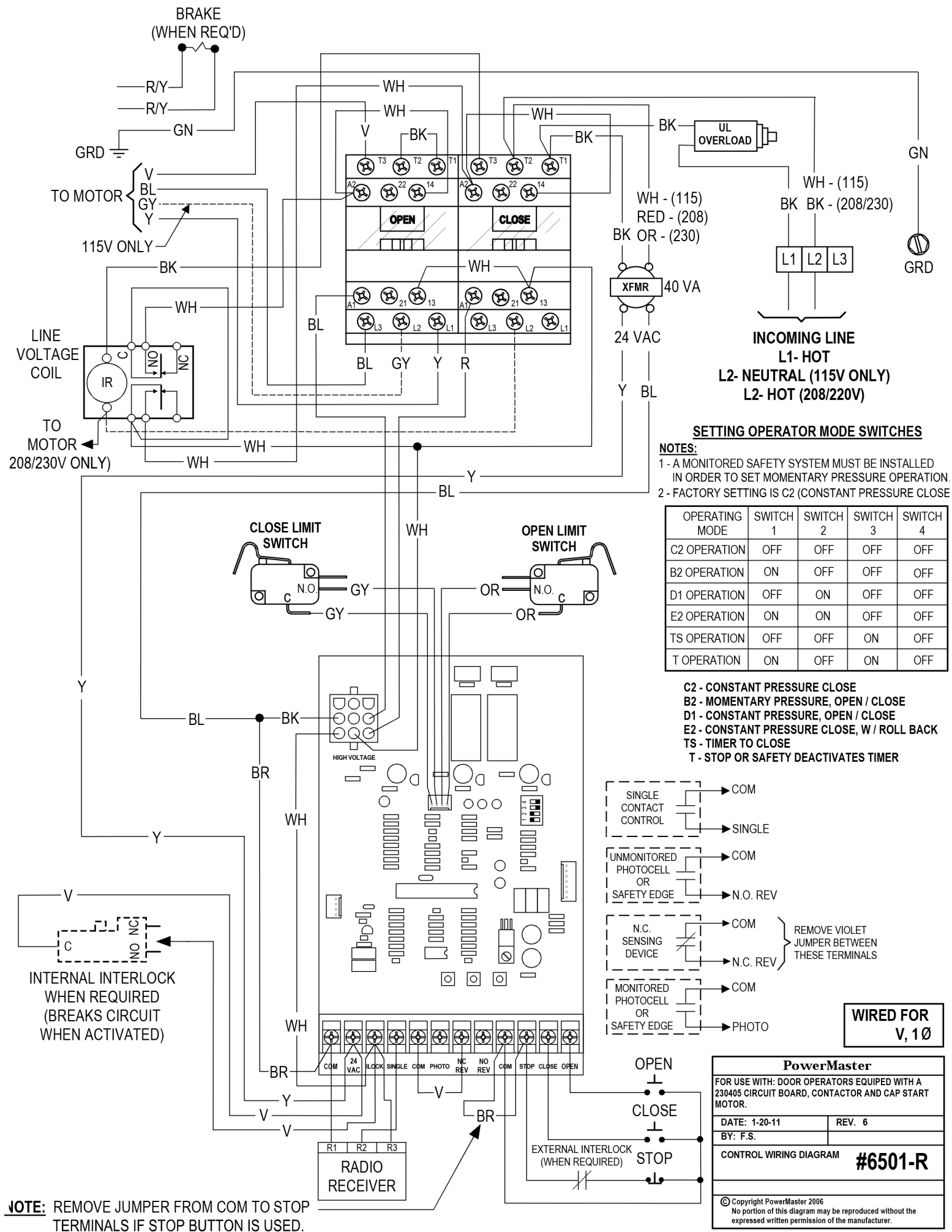
RIGHT HAND MOUNTING

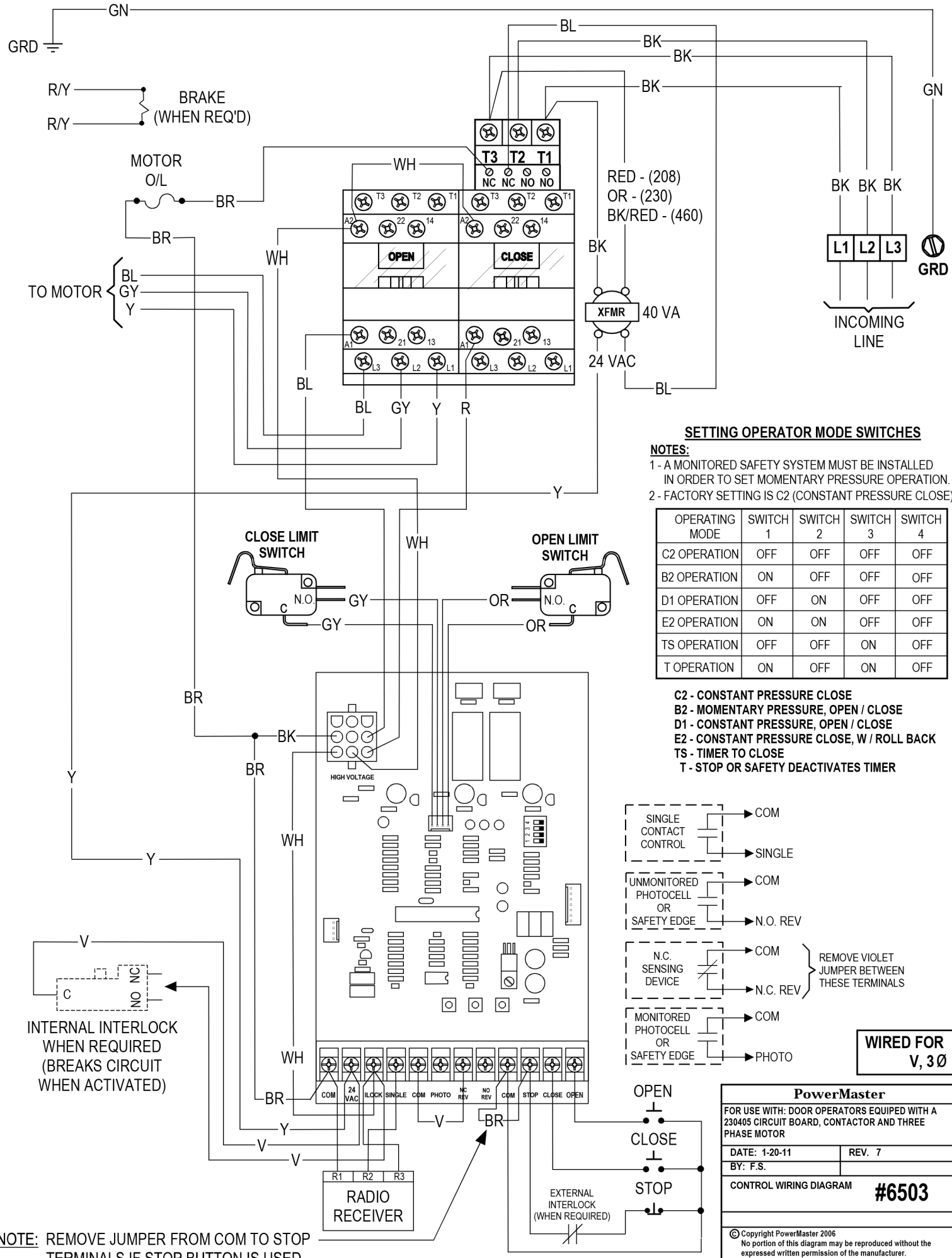
CGH HAND CHAIN INSTALLATION



ASSEMBLY DETAIL

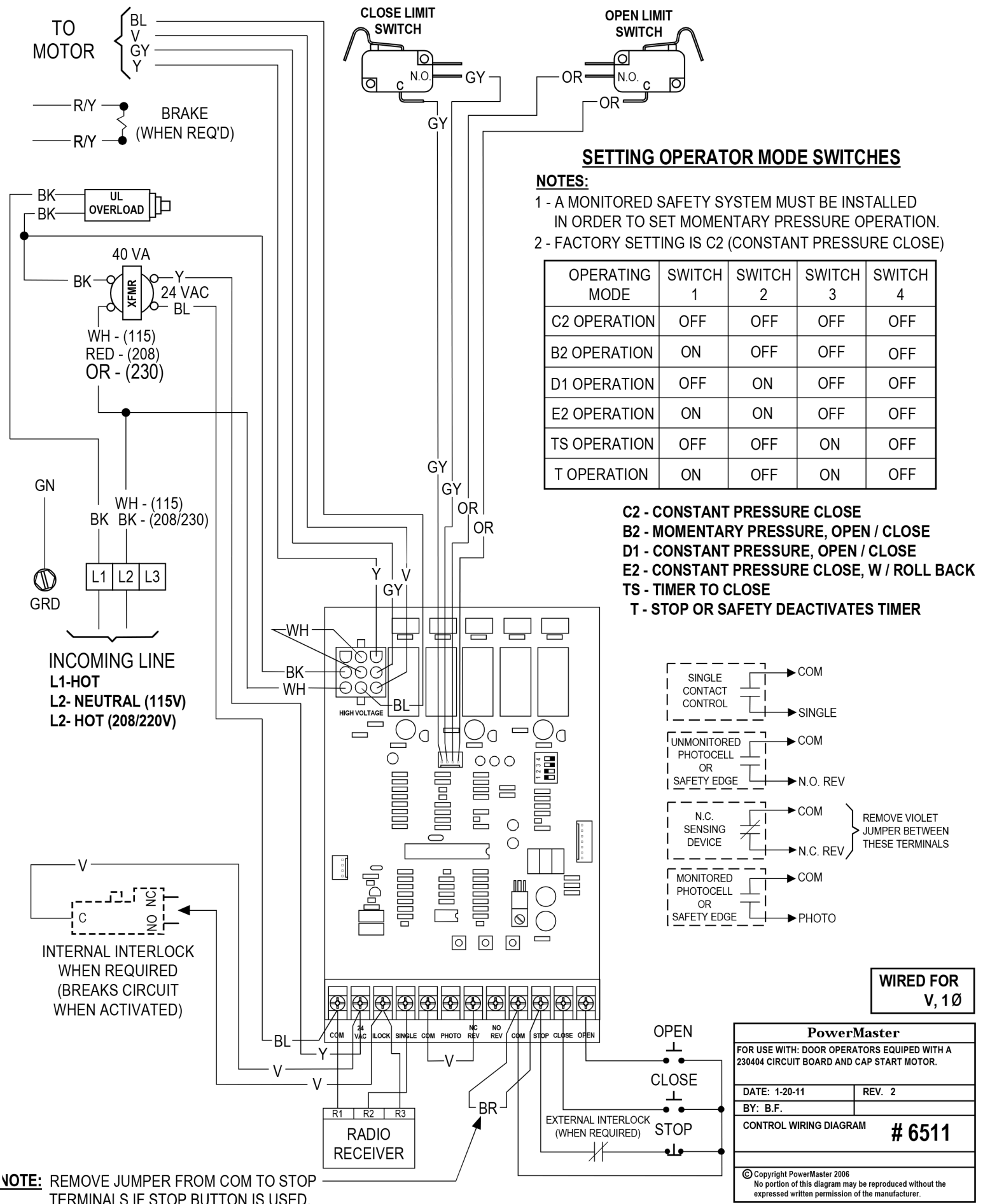






NOTE: REMOVE JUMPER FROM COM TO STOP TERMINALS IF STOP BUTTON IS USED.

NOTE: INTERNAL START SWITCH, IN MOTOR, MUST NOT BE USED WITH THIS TYPE OF WIRING.



NOTE: REMOVE JUMPER FROM COM TO STOP TERMINALS IF STOP BUTTON IS USED.

CGH

INSTALLATION MANUAL

IMPORTANT! KEEP FOR FUTURE REFERENCE.

The following information should be recorded at time of installation:

Operator Model _____
Serial # _____
Wiring Diagram # _____
Date Installed _____

The Operator model and serial number are located on the electrical enclosure cover. Wiring Diagram is located inside the cover, and the diagram number is in the lower right-hand corner.

The above information should be given in all correspondence regarding this operator to ensure fast service when ordering parts or requesting information.

PowerMaster

Limited 2-Year Warranty

PowerMaster warrants all door operators to be free of defects in materials and workmanship for a period of two (2) years from date of purchase. If any part is found to be defective during this period, new parts will be furnished free of charge. Failure of this product due to misuse, improper installation, alterations, vandalism, or lack of maintenance is not covered under this warranty, and voids any other implied warranties herein.

PowerMaster is not responsible for any labor charges incurred in connection with the installation of warranted parts.

In order to activate this warranty, the registration form below MUST be completed and returned within THIRTY CALENDAR DAYS FROM DATE OF PURCHASE via certified mail, fax (631-231-4274) or via email to pmtech@optonline.net. If registration is not activated, a one-year warranty will apply.

Model _____
Serial # _____
Date Installed _____

Installer's Information

Company Name _____
Address _____
Address 2 _____
City, State, Zip _____
Telephone # _____
Contact Name _____

Need Technical Support?

Visit: www.vepower.net/faqs



www.facebook.com/PowerMasterOperators