

ON/OFF Control

Model MR-318

1. INTRODUCTION

Thank you for your purchase of a SkylinkHome™ ON/OFF Control Model MR-318. This On/Off Control allows you to wirelessly turn on and off connected lights or appliances with the SkylinkHome™ transmitters.

The ON/OFF Control MR-318 can communicate with up to 8 transmitters, so user has the option to add more transmitters to the system, such as more remote controls, or motion sensors etc.

All wireless signal communications within the SkylinkHome™ System are based on rolling code technology to ensure highest security is used.

The following items are included in this package:

- ON/OFF Control
- Screws and Accessories



ON/OFF Control
MR-318



Screws and Accessories

CAUTION

Installation is required and enclosed instructions must be followed carefully to all steps and notes. If you are uncertain or uncomfortable performing this installation, please consult a qualified electrician. This manual should also be retained for future reference.

2. INSTALLATION

1. Turn off power to the circuit that you plan on installing the ON/OFF Control to at the circuit breaker.

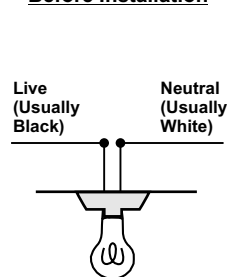
WARNING

Failure to turn off power at the circuit breaker can result in electrical shock causing severe or fatal injury.

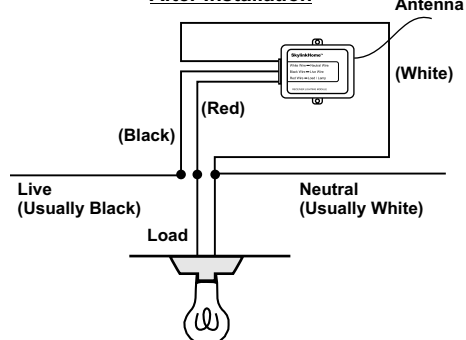
The ON/OFF Control is designed to operate maximum load of 600W at 120VAC.

2. Follow the diagrams below to install the ON/OFF Control with the 3 wires: Neutral, Live and Load. Use the provided screws to secure the ON/OFF Control. The grey antenna should not be cut or connected to anything else.
3. After all the wires are connected, ensure that all of the wire connectors are attached securely and there should be no exposed copper wiring. Straighten the antenna after installation.

Before Installation



After Installation



4. Secure the MR-318 to a flat surface by 2 screws or you may place it inside the fixture.
5. Turn the circuit breaker back on and turn on the wall switch that is used to operate this.
6. After you hear a single beep, the ON/OFF Control is installed properly and you can start programming transmitters to the ON/OFF Control.

Note:

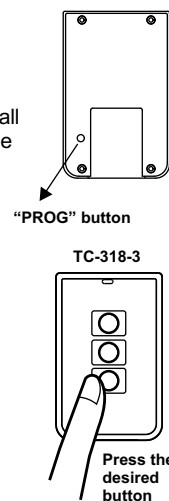
Antenna (grey wire) - Do not cut it, keep it as straight as possible after installation.

3. PROGRAMMING TRANSMITTERS

In order to operate the ON/OFF Control remotely, a transmitter must be programmed to the ON/OFF Control. Each ON/OFF Control can be operated by up to 8 different transmitters (or 8 different command signals).

To program a TC series transmitter into the ON/OFF Control, follow the instructions below.

1. The ON/OFF Control should be powered off initially. This can be done by switching off the wall switch or circuit breaker controlling the receiver module.
2. Power on the ON/OFF Control by switching on the wall switch or circuit breaker. You will hear a beep from the ON/OFF Control. The beep indicates the ON/OFF Control is now in programming mode and it will stay in this mode for 15 seconds.
3. Press the PROG button on the back of the transmitter with a sharp object. The front LED will be on.
4. Press the button on the transmitter that you would like to program into the ON/OFF Control, the front LED will flash.
5. Once the transmitter is programmed, the ON/OFF Control will beep, indicating you have successfully programmed the transmitter to the On/Off Control. Now the programmed transmitter button is ready to be used.



Note: To program other transmitters/sensors (besides TC transmitter), please refer to the instructions of those transmitters/sensors and the above instructions.

4. ON / OFF OPERATION

The MR-318 ON/OFF Control allows on / off operation, when the programmed button is pressed, it will transmit a signal to toggle the current status of the load. For example, if a toggle signal is received when the light is off, that signal will turn on the light.

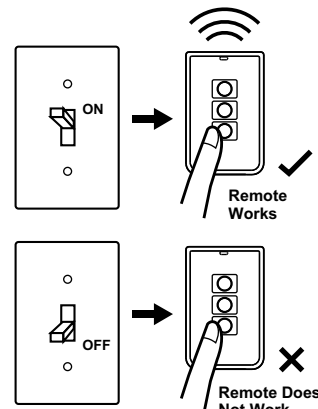
If you have a deluxe remote, you can make sure that you will actually turn on a light by pressing [ON] first, then the programmed button. Similarly, you can make sure that you will turn off a light by pressing [OFF] first, then the programmed button.

If you have a deluxe remote and you press [ON], all those receivers to which the remote is programmed will turn on their loads. If you press [OFF], all those receivers to which the remote is programmed will turn off their loads.

Note:

If the ON/OFF Control is installed after a wall switch, you can use the transmitter to operate the light remotely only if the wall switch is in the ON position. If the wall switch is off, no power is provided to the ON/OFF Control and therefore, you cannot operate the light remotely.

In case the transmitter is not on hand, you can still operate the lighting fixture with the wall switch.



This receiver offers two optional states after powered on, choose the one which fits your requirement.

1. Power On - Light On:

- 1) You may use the wall switch to control the light as usual.
- 2) After a power outage and the electricity comes back, the light will be on if the wall switch is in On position.

4. ON / OFF OPERATION (CONT)

2. Power On - Light Off:

- 1) With the wall switch, you have to use this special sequence to turn on the light: first, switch on, second, switch off then switch on immediately (within 2 seconds), the light will be turned on.
- 2) After a power outage and electricity comes back, the light will be off under most of the circumstances.

To toggle a receiver between these two states, re-program a transmitter twice consecutively to the receiver. Referring to Section 3, repeat the programming steps twice consecutively with a transmitter that is already programmed, the receiver will change state.

Note: When used with an optional Motion Sensor ID-318, this ON/OFF Control can operate under countdown timer mode.

Note: The two optional Power-On states are also applicable to loads other than lights.


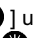
5. ZONE OPERATION (AVAILABLE WITH 10-BUTTON / 14-BUTTON DELUXE TRANSMITTER ONLY)



An optional deluxe remote is needed for zone operation. A Zone Command allows you to operate multiple lights altogether in the same zone. A zone command must first be programmed to the receiver before zone operation. To program a zone command, please refer to the user's instructions of the deluxe remote.

Zone Operation - On / Off

To turn on or off a zone, hold [] or [] until the red LED flashes three times and keeps on, then release the held button and press the zone number.

For example:

Hold [] until the red LED flashes three times and keeps on, then release [] and press [1], all lights in zone 1 will be turned on.

Hold [] until the red LED flashes three times and keeps on, then release [] and press [1], all lights in zone 1 will be turned off.

Note: The Zone Operation is also applicable to loads other than lights.

6. ERASING TC TRANSMITTERS FROM THE ON/OFF CONTROL

You may erase a transmitter from the ON/OFF Control, but you cannot erase a specific device directly, you must erase all the wireless devices, then program the ones you want to keep. Follow the instructions below to erase programmed TC transmitters.

1. Power off the lighting receiver. (Switch off the wall switch)
2. Press the PROG button on the back of the TC transmitter, the front LED will be on.
3. Press and hold the programmed button on the TC transmitter for at least 2 seconds, the red LED will flash quickly. Do not release this button until step 5.
4. Power up the ON/OFF Control (Switch on the wall switch), you will hear a beep.
5. You may release the button on the transmitter.
6. When the button is release, the ON/OFF Control will beep, indicating you have successfully erased all the devices from the ON/OFF Control.

To erase other transmitters / sensors, please refer to the instructions of the transmitters / sensors.

7. TECHNICAL SPECIFICATIONS

Input Voltage: 120VAC, 60Hz
Standby Current: 3mA
Minimum Load: 10W
Maximum Load: 600W at 120VAC
Operating Frequency: 318MHz
Operational Temperature: -4° F - 140° F (-20° C - 60° C)
Humidity: 5%-95%
Range: Up to 500 feet in open area

8. FCC

The Remote Control is approved by the FCC and it complies with Part 15 of the FCC Rules. Its operation is subject to the following two conditions :

1. This device may not cause harmful interference.
2. This device must accept any interference that may cause undesired operation.

WARNING:

Changes or modifications to this unit not expressly approved by the party responsible of compliance could void the user's authority to operate the equipment.

9. WARRANTY

If, within one year from date of purchase, this product should become defective (except battery), due to faulty workmanship or materials, it will be repaired or replaced, without charge. Proof of purchase and a Return Authorization are required.

10. CUSTOMER SERVICE

If you would like to

- find out the up-to-date specifications
- know more about features and applications
- download documents, i.e. user's instructions
- order Skylink products

or if you have difficulty getting products to work, please:

1. visit our FAQ section at www.skylinkhome.com, or
2. email us at support@skylinkhome.com, or
3. call our toll free at 1-800-304-1187 from Monday to Friday, 9 am to 5 pm EST. Fax (800) 286-1320

11. ACCESSORIES

The SkylinkHome™ System consists of many other devices such as SkylinkHome™ Remotes, Motion Sensor, ON/OFF Wall Switch, Wall Dimmer, Plug-In Dimmer with or without Repeater, Plug-In ON/OFF Control (Outdoor/Indoor), Screw-In Dimmer, ON/OFF/Dimming Control, ON/OFF Control, Smart Button™ Garage Door Control, etc. Please visit Skylink website at www.skylinkhome.com for more information.



CUSTOMER SERVICE

17 Sheard Avenue, Brampton, Ontario, Canada L6Y 1J3
Email: support@skylinkhome.com
<http://www.skylinkhome.com>
P/N. 101Z698
Patent Pending
©2010 SKYLINK GROUP