

ON/OFF/Dimming Control

Model MD-318

1. INTRODUCTION

Thank you for your purchase of a SkylinkHome™ ON/OFF/Dimming Control Model MD-318. This ON/OFF/Dimming Control allows you to wirelessly turn on and off, dim and brighten connected lights with the SkylinkHome™ lighting transmitters.

The ON/OFF/Dimming Control MD-318 can communicate with up to 8 transmitters, so user has the option to add more transmitters to the system, such as more remote controls, or motion sensors etc.

All wireless signal communications within the SkylinkHome™ System are based on rolling code technology to ensure highest security is used.

The following items are included in this package:

- ON/OFF/Dimming Control
- Screws and Accessories
- User's Instructions



Screws and Accessories

CAUTION

Installation is required and enclosed instructions must be followed carefully to all steps and notes. If you are uncertain or uncomfortable performing this installation, please consult a qualified electrician. This manual should also be retained for future reference.

2. INSTALLATION

1. Turn off power to the circuit that you plan on installing the ON/OFF/Dimming Control to at the circuit breaker.

WARNING

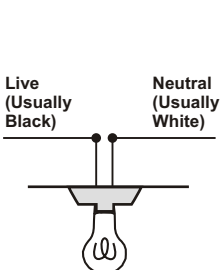
Failure to turn off power at the circuit breaker can result in electrical shock causing severe or fatal injury.

Note: Lighting Load

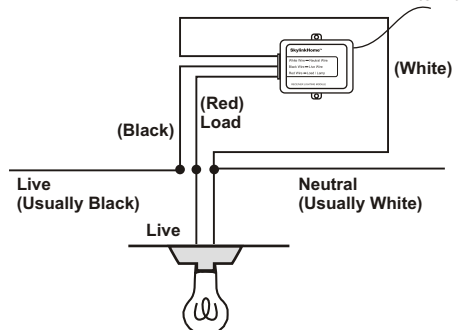
The ON/OFF/Dimming Control is designed to operate incandescent light or dimmable compact fluorescent light with a maximum load of 300W at 120VAC. Light bulbs must be dimmable in order to achieve dimming function.

2. Follow the diagrams below to install the ON/OFF/Dimming Control with the 3 wires: Neutral, Live and Load. The grey antenna should not be cut or connected to anything else.
3. After all the wires are connected, ensure that all of the wire connectors are attached securely and there should be no exposed copper wiring. Straighten the antenna after installation.

Before Installation



After Installation



4. Secure the MD-318 to a flat surface by 2 screws or you may place it inside the lighting fixture.
5. Turn the circuit breaker back on and turn on the wall switch that is used to operate this lighting fixture.
6. After you hear a single beep, the ON/OFF/Dimming Control is installed properly and you can start programming transmitters to the ON/OFF/Dimming Control.

Note:

Antenna (grey wire) - Do not cut it, keep it as straight as possible after installation.

3. PROGRAMMING TRANSMITTERS

In order to operate the ON/OFF/Dimming Control remotely, a transmitter must be programmed to the ON/OFF/Dimming Control. Each ON/OFF/Dimming Control can be operated by up to 8 different transmitters (or 8 different command signals).

To program a transmitter into the ON/OFF/Dimming Control, follow the instructions below.

You will also need the instructions from the transmitter.

1. The ON/OFF/Dimming Control should be powered off initially. This can be done by switching off the wall switch or circuit breaker controlling the ON/OFF/Dimming Control.
2. Power on the ON/OFF/Dimming Control by switching on the wall switch or circuit breaker. You will hear a beep from the On/Off/Dimming Control. The beep indicates the ON/OFF/Dimming Control is now in programming mode and it will stay in this mode for 15 seconds.
3. Transmit a "Learn" code from the transmitter. Refer to the manual of the transmitter to transmit this "Learn" code.
4. Once the transmitter is programmed, the ON/OFF/Dimming Control will beep, indicating you have successfully programmed the transmitter to the ON/OFF/Dimming Control. Now the programmed transmitter is ready to be used.

Note: To program other transmitters/sensors (besides TC transmitter), please refer to the instructions of those transmitters/sensors and the above instructions.

4. OPERATING MODES

The ON/OFF/Dimming Control can control the light in 2 different operating modes.

- 1) On / Off Mode - Allows operating the light either on and off, without dimming function.
- 2) Dimming Mode - Allows operating the light in on, off or dimming (dim / brighten). Light must be either incandescent light or dimmable compact fluorescent light.

WARNING

Non-dimmable load has to be always working under ON/OFF mode. Using non-dimmable load under dimming mode may damage the non-dimmable CFL.

The factory default operating mode is on/off mode. However, if your light is dimmable, you may change the operating mode to Dimming Mode. To change the operating modes, please follow the instructions below.

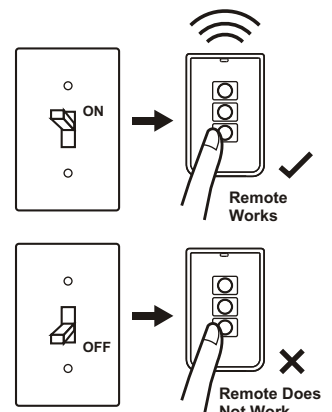
1. Turn on the light by activating the programmed transmitter.
2. Press and hold a button on the transmitter (TC series, TM series, TD series, TB series) that is programmed to the module for 10 seconds.
3. The light will flash. If it flashes once, that means it is in On / Off Mode. If the light flashes twice, that means it is in Dimming Mode.
4. Repeating step 2 above will toggle the setting between On / Off Mode and Dimming Mode.

Note: When used with an optional Motion Sensor ID-318, this ON/OFF/Dimming Control can operate under countdown timer mode.

5. OPERATION

Note:

If the ON/OFF/Dimming Control is installed after a wall switch, you can use the transmitter to operate the light remotely only if the wall switch is in the ON position. If the wall switch is off, no power is provided to the ON/OFF/Dimming Control and therefore, it cannot operate the light.



5. OPERATION (CONT)

In case the transmitter is not on hand, you can still operate the lighting fixture with the wall switch.

This receiver offers two optional states after powered on, choose the one which fits your requirement.

1. Power On - Light On:

- 1) You may use the wall switch to control the light as usual. When the wall switch is off, the light is off. When the wall switch is on, the light is on.
- 2) After a power outage and the electricity comes back, the light will be on if the wall switch is in On position.

2. Power On - Light Off:

- 1) A special sequence is needed to turn on the light by the wall switch. To turn on the light by the wall switch: 1) Switch On, 2) Switch Off, 3) Switch On again within 2 seconds. Light will be on.
- 2) After a power outage and electricity comes back, the light will be off under most of the circumstances.

To toggle a receiver between these two states, re-program a transmitter twice consecutively to the receiver. Referring to Section 3, repeat the programming steps twice consecutively with a transmitter that is already programmed, the receiver will change state.

6. ERASING TRANSMITTERS FROM THE ON/OFF/DIMMING CONTROL

You may erase a transmitter from the ON/OFF/Dimming Control, but you cannot erase a specific device directly, you must erase all the wireless devices, then program the ones you want to keep. Follow the instructions below to erase programmed transmitters.

1. Power off the lighting receiver. (Switch off the wall switch)
2. Transmit a "Erase" code from the transmitter until step 4.
3. Power up the ON/OFF/Dimming Control (Switch on the wall switch), you will hear a beep.
4. You may stop the "Erase" code signal transmission, the ON/OFF/Dimming Control will beep, indicating you have successfully erased all the devices from the ON/OFF/Dimming Control.

To erase other transmitters / sensors, please refer to the instructions of the transmitters / sensors.

7. TECHNICAL SPECIFICATIONS

Input Voltage: 120VAC , 60Hz
Standby Current: 6mA
Minimum Load: 10W
Maximum Ballast Load: 150W
Maximum Tungsten Load: 300W
Operating Frequency: 318MHz
Operational Temperature: -4°F - 140°F (-20°C - 60°C)
Humidity: 5%-95%
Range: Up to 500 feet in open area

8. FCC

The Remote Control is approved by the FCC and it complies with Part 15 of the FCC Rules. Its operation is subject to the following two conditions :

1. This device may not cause harmful interference.
2. This device must accept any interference that may cause undesired operation.

WARNING:

Changes or modifications to this unit not expressly approved by the party responsible of compliance could void the user's authority to operate the equipment.

9. WARRANTY

If, within one year from date of purchase, this product should become defective (except battery), due to faulty workmanship or materials, it will be repaired or replaced, without charge. Proof of purchase and a Return Authorization are required.

10. CUSTOMER SERVICE

If you would like to
find out the up-to-date specifications
know more about features and applications
download documents, i.e. user's instructions
order Skylink products

or if you have difficulty getting products to work, please:

1. visit our FAQ section at www.skylinkhome.com, or
2. email us at support@skylinkhome.com, or
3. call our toll free at 1-800-304-1187 from Monday to Friday, 9 am to 5 pm EST.
Fax (800) 286-1320

11. ACCESSORIES

The SkylinkHome™ System consists of many other devices such as SkylinkHome™ Remotes, Motion Sensor, ON/OFF Wall Switch, Wall Dimmer, Plug-In Dimmer with or without Repeater, Plug-In ON/OFF Control (Outdoor/Indoor), Screw-In Dimmer, ON/OFF/Dimming Control, ON/OFF Control, Smart Button™ Garage Door Control, etc. Please visit Skylink website at www.skylinkhome.com for more information.



CUSTOMER SERVICE

17 Sheard Avenue, Brampton, Ontario, Canada L6Y 1J3
Email: support@skylinkhome.com
<http://www.skylinkhome.com>
P/N. 101Z699-002 R2
Patent Pending
©2010 SKYLINK GROUP