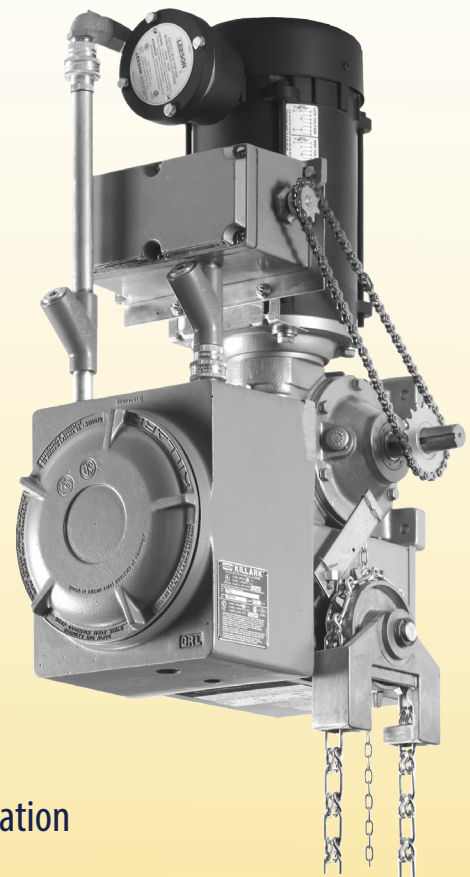


## EMG

**Hazardous Duty, Gear Reduced Hoist Operator for Sectional Doors with High Lift or Vertical Lift and Rolling Service Doors & Grilles in NEMA 7&9 Hazardous Locations.**

### Standard Features:

- High starting torque Explosion proof motor with full overload protection
- Heavy duty full voltage reversing contactor
- 3 button NEMA 7&9 control station included
- 24VAC pre-wired for 3 button station, 1 button station, intrinsically safe automatic reversing equipment and all types of access control equipment
- Heavy duty corrosion resistant #50 roller chain and drive sprocket included
- Floor level disconnect with chain hoist assembly and electrical interlock for manual operation
- Auto-Detect Monitored Photo Beam for Simplified Installation



All door operators are required to have a monitored safety system, such as monitored photo eyes and/or monitored 2 or 4 wire obstruction sensing edge. In addition, an ancillary device may be used. The primary device must be a constantly monitored, anti entrapment/safety device.

[www.VEpower.net](http://www.VEpower.net)

[Facebook.com/PowerMasterOperators](https://www.facebook.com/PowerMasterOperators)

**SERVICING THE INDUSTRY SINCE 1969**

# EMG

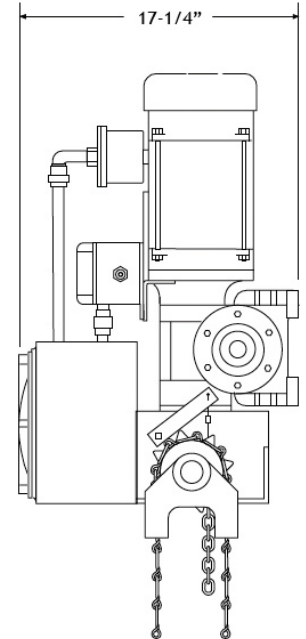
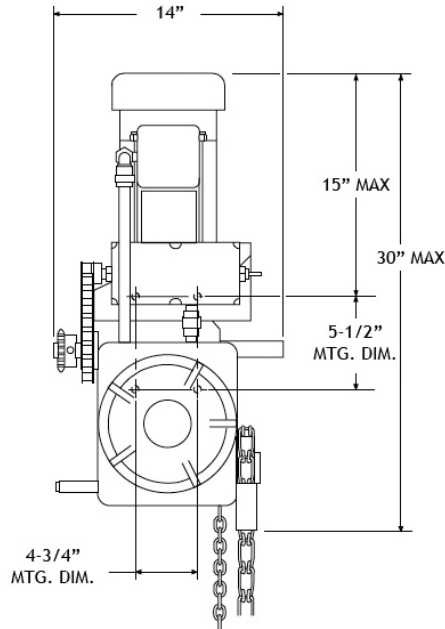
## Architectural Specs

PowerMaster model EMG Industrial Duty hoist operator for use on Sectional Doors with high lift or vertical lift, and rolling service doors and grilles in NEMA 7&9 Hazardous Locations.

Primary speed reduction is by industrial gear box with bronze worm gear in an oil bath. Motor is high starting torque, continuous duty industrial type, protected from overload by a current sensing or thermal type overload device. Motor controller is a heavy duty, full voltage, across the line, magnetic reversing contactor, that is mechanically and electrically interlocked.

Electrical components installed in a NEMA 7&9 enclosure integral to the operator. A transformer is provided to reduce control voltage to 24 VAC. Separate terminal strips are provided for connection of power supply line and all control devices.

Operator is wired for an open/close/stop control station. Control circuit provides instant reverse motor wiring on 1Ø operators. Positive chain driven, rotary type limit switches are provided to limit full open and close travel of door. Limit switch adjustment is not affected by removal of motor or by manual operation of door. A floor level manual hoist chain is provided for emergency operation of door. An electrical interlock switch is provided to disable control circuit while manual hoist chain is engaged. Final drive chain is #50 or larger. Operator is capable of right or left hand mounting in either a vertical or horizontal position.



## CAUTION

A moving door can cause serious injury or death!

Carefully read and follow all safety instructions, precautions, and guidelines when installing and using this product.

Motorized doors are for vehicles only. Pedestrians must use a separate entrance. **NO ONE SHOULD CROSS THE PATH OF A MOVING DOOR!**

Proper reversing devices must be installed to avoid all hazards and entrapment. Eliminate all hazards and entrapment areas.

Warning signs must be permanently installed and visible to traffic and pedestrians.

Never allow children to operate or play with controls.

Follow UL 325 and ASTM F220-02 standards.

Do not install this product unless all hazards and entrapment points are protected.

