

37958R

Opto-Luctor Replacement

This repair will require removal of the unit from its mounting hardware and repairs made on a bench or floor. Refer to your Owners Manual and/or Installation Poster for proper assembly and carefully read and understand all warnings and cautions pertaining to your unit.



WARNING

BE SURE ELECTRICAL POWER HAS BEEN DISCONNECTED FROM THE INPUT POWER LINES PRIOR TO REMOVING THE MOTOR COVER.



WARNING

ANY AND ALL REPAIRS MADE TO THIS UNIT MUST BE PERFORMED WITH THE DOOR DISCONNECTED FROM THE OPENER AND IN THE CLOSED POSITION.

1. Pull Emergency Release Cord on Carriage to disengage Opener to close door if necessary. (If unable to lower door using Opener, use extreme caution manually closing door. Before pulling Emergency Release Cord, make certain people and objects are clear of door opening.)
 2. Unplug Opener Power Cord from power receptacle.
 3. Open Lens Cover by pressing middle tab inward and remove Light Bulbs. FIG. 1. (See reverse side)
 4. Remove Wall Control and Safe-T-Beam wires from Terminal Block located on side of Opener FIG. 1. Use small common screwdriver to press in on orange tabs while gently pulling wires from block. Mark wires to help facilitate replacement.
 5. Remove the Cotter Pin & Clevis from Door Arm to separate door from Opener. FIG. 2.
 6. Remove Motor Head and Rail Assembly from mounting brackets and set on a clean work surface or floor.
 7. Remove the 6-7/16" self tapping bolts from the Rail/Motor mounting straps and pull Rail from Motor Head. FIG.3. Set Rail Assembly aside.
 8. Remove two 5/16" screws securing Powerhead Cover to Chassis. FIG. 4.
 9. Remove 3 Grounding Wires (green) from Chassis. FIG.5-B.
 10. Unplug these Harnesses from Control Board. FIG. 4. (DO NOT remove control board as illustrated. Shown for clarity only)
 - Motor Harness
 - Opto-Luctor Harness
 - Power Cord Harness
 11. Powerhead Cover can now be removed from Opener Chassis for repair.
 12. Pull Motor Starting Capacitor from bracket. (Do not remove wires) FIG. 5-A
 13. Remove three Motor Mounting Bolts from Motor frame FIG. 5.-C Remove Motor Assembly.
 14. Using an 11/32 socket or nut driver, press down on Opto-Luctor Wheel mounting clips while pushing Wheel upwards to remove Opto-Luctor Wheel. FIG. 5-D-E.
 15. Remove and retain the screw holding Opto-Luctor Bracket to Motor Frame FIG 6-A.
 16. Remove and retain E-ring holding Motor Gear to Motor Shaft. FIG. 6-B.
 17. Remove and retain Motor Gear. FIG. 6-B.
 18. Install replacement Bracket with the screw from old bracket.
 19. Install Motor Gear and E-ring to motor shaft.
 20. Snap Opto-Luctor Wheel into place. (Interrupter Fins face Opto-Luctor.)
 21. Install Motor Assembly in reverse order.
 22. Remove Opto-Luctor Harness from old Opto-Luctor and Install onto Replacement Motor FIG. 7.
- NOTE: Be certain to install all harnesses in the correct position being sure to install with locking tabs facing each other. (See Harness Detail in FIG. 7 & 8).
23. Hang Powerhead Cover to Chassis to install harnesses.
 24. Install Ground wires onto Chassis. FIG. 5-B.

25. Install Powerhead Cover onto Chassis using 2- 5/16" screws. FIG. 4.
26. Install Rail to Motor Head Assembly using Coupler, Mounting Flange and 6-7/16" self tapping screws. FIG. 3.
27. Reinstall Opener Assembly in reverse order as removed. Reference your Owners Manual and Installation Poster.
28. Install Wall Control and Safe-T-Beam wires. Install Battery Backup and/or Network Harnesses if applicable.
29. Install Light Bulbs and close Lens Cover.
30. Plug Opener in.
31. Clear and reprogram Limit Controls per Owners Manual.

FIG. 1.

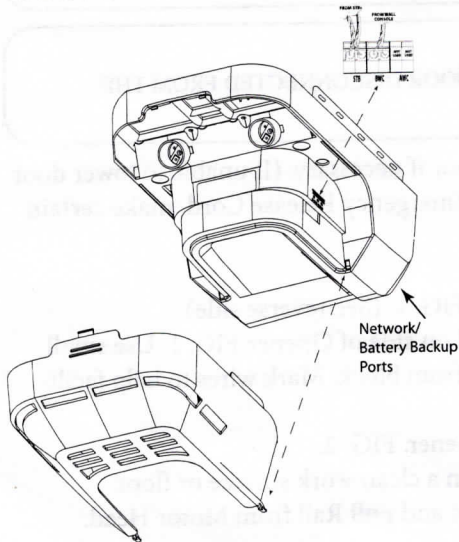


FIG. 2.

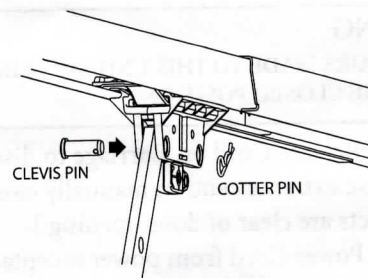


FIG. 3.

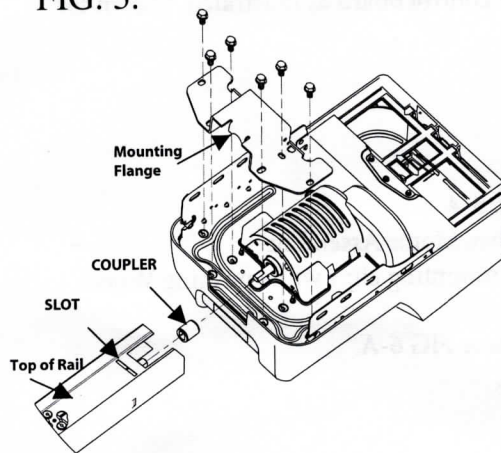
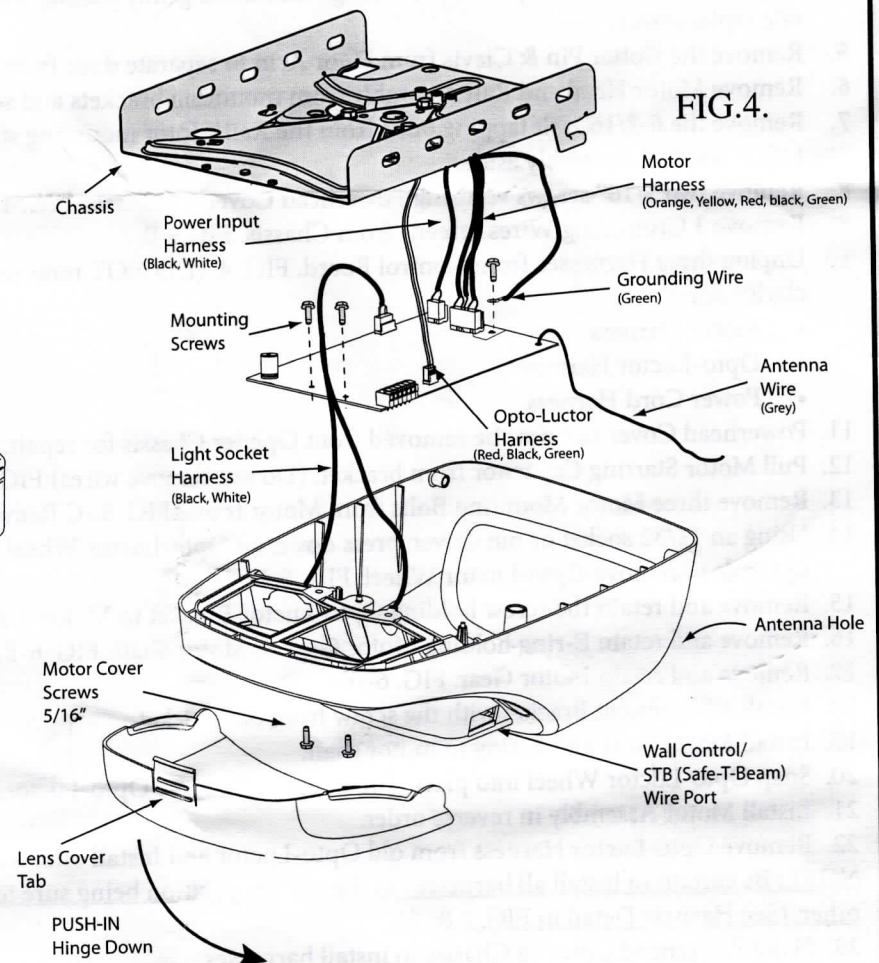


FIG. 4.



★ NOTE: Your Motor Cover may differ in appearance than illustrated. Replacement instructions are identical.

FIG. 5.

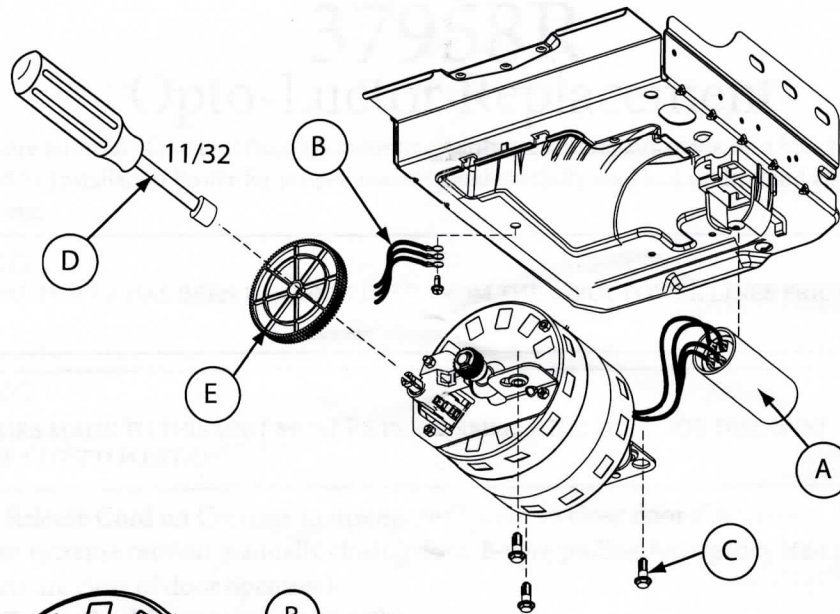


FIG. 6

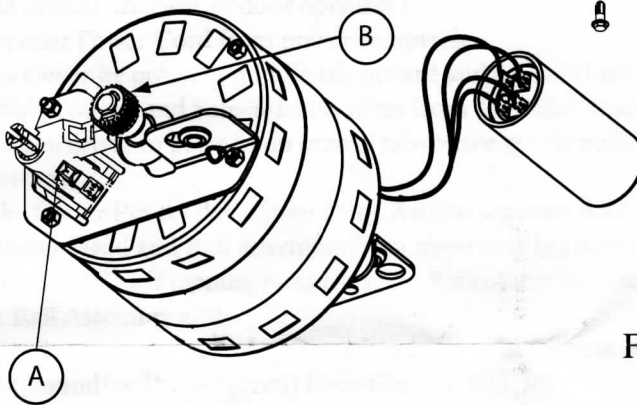


FIG. 8

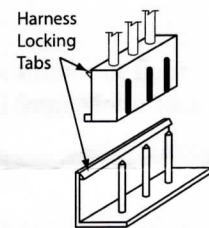


FIG. 7

